

IMMEDIATE OPENINGS
Do You Need Extra Money for Rent,
Car Payment or Savings for Retirement?
A.P.S. Advertisers
Postal Service
A Choice Publications Company
**WEEKEND DELIVERY ROUTE
POSITIONS AVAILABLE NOW!**
For information on available routes, email
LSnyder@AdvertisersPostalService.com
or call Lewis at 231-331-5076.

Charlevoix County News

February 18, 2016

STILL
JUST
75¢

YOUR SOURCE FOR LOCAL NEWS & SPORTS

BOYNE CITY, CHARLEVOIX, EAST JORDAN, ELLSWORTH AND SURROUNDING AREAS

SUBSCRIBE TODAY

Distributed to Boyne City, East Jordan, Charlevoix, Boyne Falls, Walloon Lake, Ellsworth and Atwood • 989.732.8160

Just \$55.00 A Year Office@CharlevoixCountyNews.com
Friendly & Positive News and Sports! www.CharlevoixCountyNews.com



BOYNE CITY - Affordable opportunity in Boyne City. Priced to sell. Home has a number of updates, including new insulation, wood floors, and more. Located very close to schools this home is a great opportunity for a first home. Location contributes to great rental potential as well. Nice backyard with decking allows for some privacy for this in town setting. Contact your agent to schedule a tour. \$74,900



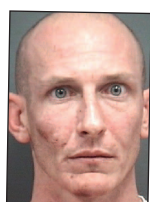
www.whylyndas.com
27 S. Lake St., Boyne City, MI
231-582-9555

CHARLEVOIX COUNTY POLICE AND COURTS

Trial date set for Boyne City man accused of murder

CHARLEVOIX - A Boyne City man facing an open murder charge will have his day in court-or in his case, a good nine days.

Charlevoix County Circuit Court Judge Roy C. Hayes III has scheduled the murder trial of 34-year-old Matthew Mark Fruge of Boyne City for July 11-15 and July 18-21.



Matthew Mark Fruge

Fruge is accused of stabbing to death 34 year-old Jacob Daniel Conklin, a former East Jordan resident who also was from Arcadia Florida, and thought to be friends with Fruge.

According to a court affidavit, around 7pm on October 1, 2015, Fruge reportedly took a knife from his home in Bay Township and left to confront Conklin where he was staying at a residence on Champarette West Road in the Villa de Charlevoix complex near Horton Bay.

The affidavit reported a witness at the scene found Fruge on top of Conklin, who was reportedly bleeding from the neck with a knife lying on the ground beside

him. Police arrived to find Conklin bleeding heavily and unresponsive and EMS personnel later declared him dead at the scene.

Fruge was arrested on site after a brief struggle with police and then later charged with murder.

An autopsy report revealed Conklin sustained 10 stab wounds, including seven in the upper chest and left shoulder region.

A first degree murder conviction would mean Fruge faces a mandatory sentence of life in prison with no chance for parole. A second degree murder conviction would result in a sentence of up to life in prison. Fruge has

until May 27 to decide whether he will enter a plea agreement.

Suspect in Charlevoix break-in arrested

CHARLEVOIX - Police in Charlevoix have arrested a man suspected of breaking into a local auto repair shop and stealing hundreds of dollars.

According to police reports, Larry Dale Gardner, 39, of Charlevoix has been arrested and faces a ten year felony charge of breaking



Larry Dale Gardner

and entering with intent to commit larceny.

Charlevoix Police Chief Gerard Doan said employees at Lakeshore Tire called police around 5:30 pm January 25 to report a man acting suspiciously behind the business, which is located at 1405 Bridge Street.

The employees told police they had gone to eat at a restaurant across the street from Lakeshore Tire after closing time and spotted a man they identified as Gardner walking behind the shop and acting strangely.

Police found the back door to Lakeshore Tire unlocked and dis-

See Courts-3A

SPORTS REPORT



Thomas Brandell (22) of East Jordan powers up a shot following an offensive rebound early in the Red Devils win over the Blazers. (PHOTO BY CHRIS FIEL)



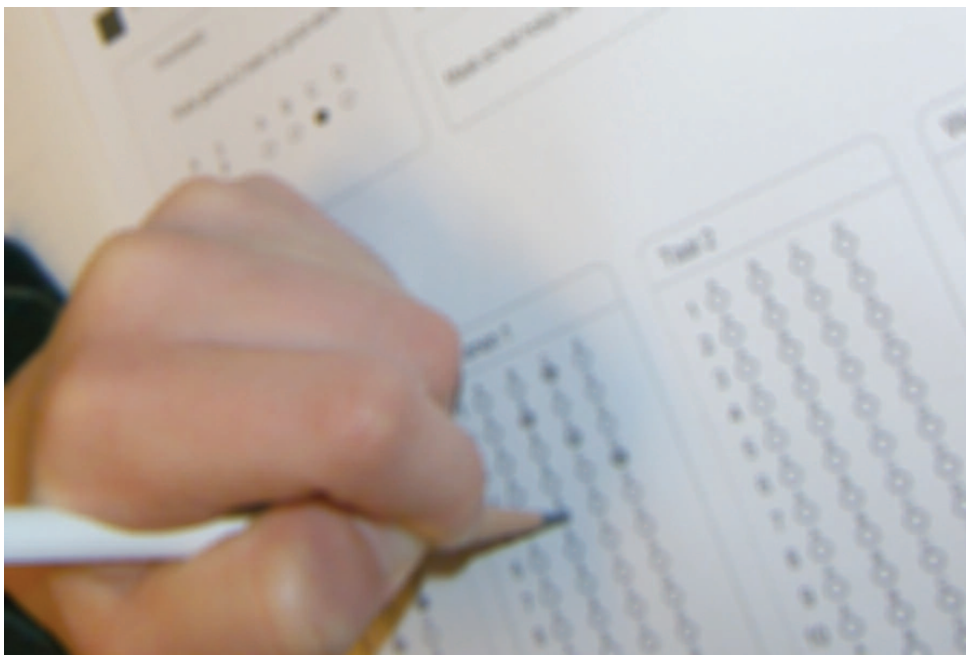
East Jordan's Kaitlyn Hines (40) gets a shot off during third quarter action against Kalkaska. (PHOTO BY CHRIS FIEL)

2015 high school "Academic State Champs" list released

By Jim Akans

Bridge Magazine has just released their 5th annual Academic State Champs competition high school rankings for Michigan. Drawing from data for nearly 770 public and charter high schools, the rankings are based on the percentage of students deemed career or college ready. The results are adjusted for school size and county income levels in each district, and students were evaluated in four academic subjects; English, Math, Reading and Science.

On their web site, Bridge noted they were "not issuing 2015 State Champs certificates for elementary and middle schools. That's because Michigan switched last year from its longstanding use of the MEAP test to a new standardized test, known as M-STEP. Because 2015 was M-Step's first year, Bridge does not consider its results sufficiently reliable to issue school-level ratings. Bridge demands at least three years of test data for State Champs recognition."



Bridge Magazine has just released their 5th annual Academic State Champs competition high school rankings for Michigan. WIKIPEDIA PHOTO

So this year Bridge used ACT proficiency scores and rankings were based on each schools percent of 11th grade students that tested as career or college ready in the four subject categories noted above. Topping the list, forty-four high schools were named Academic State Champs for Michigan.

The schools ranked were divide into categories representing three county

sizes; large, medium and small, and three county income levels; low, medium and higher. Adjusted for these criteria, schools overall scoring of 101 and above were considered at "exceeding expectations" for career and college proficiency and those scoring under 99 were considered as falling short of that criterion.

In each of the four subject categories statewide

proficiency "benchmarks" were established. The benchmark proficiency scores are; English - 58.4%, Math - 33.5%, Reading - 36.1%, Science - 32.4%

For additional information visit <http://bridgemi.com/2016/02/interactive-database-find-your-michigan-high-school/>

Charlevoix County area school results

BOYNE CITY HIGH SCHOOL

State Champs Score; 106
English; 75.6%
Math; 43.6%
Reading; 44.9%
Science; 48.7%
Student population; 391

CHARLEVOIX MIDDLE/HIGH SCHOOL

State Champs Score; 105
English; 62.2%
Math; 31.7%
Reading; 40.2%
Science; 31.7%
Student population; 514

EAST JORDAN HIGH SCHOOL

State Champs Score; 108
English; 55.6%
Math; 23.8%
Reading; 27%
Science; 30.2%
Student population; 315

BOYNE FALLS PUBLIC SCHOOL

State Champs Score; 98
English; 62.5%
Math; 43.8%
Reading; 37.5%
Science; 31.3%
Student population; 151

CONCORD ACADEMY BOYNE

State Champs Score; 92
English; 55.6%
Math; 38.9%
Reading; 44.4%
Science; 22.2%
Student population; 182

NORTHWEST ACADEMY

State Champs Score; 99
English; 50%
Math; 8.3%
Reading; 16.7%
Science; 8.3%
Student population; 71

CHARLEVOIX CITY
COUNCIL MEETING,
FEBRUARY 15

Residents air opinions at public hearing for easement at Mt. McSauba

By Tina Sundelius

CHARLEVOIX--A public hearing to discuss whether or not to place creating a conservation easement for the Mt. McSauba Recreation Area and Lake Michigan Beach Park on the November ballot drew an audience at the February 15 City Council meeting and resulted in city staff being directed to begin drafting the language to place the item on the ballot.

A larger than usual crowd filled the council chambers at City Hall Monday night. Some wanted to express their opinions on the topic of placing restrictions on the city owned parks that border Lake Michigan while others attended to gather more information on what a conservation easement entails. The hour and a half public hearing brought opinions both in favor of the easement and cautions against making uneducated decisions. Third ward resident Diane DePriest expressed concern that the easement would prevent longtime residents from enjoying the park the way they do now. "The city has been a good steward of

See City Council -5A

Index

Weather.....2A
Obituaries2A
News Briefs.....4A
Health.....7A
Local Sports.....1-2B
Class-Ads/Real Estate3-6B

CLASSIFIEDS
AS LOW AS
\$2.00
989-732-8160



Standard Mail
US Postage
PAID
Gaylord, MI
Permit No. 70

PO Box 1914, Gaylord, MI 49734-5914 • www.CharlevoixCountyNews.com • (989) 732-8160 • Office@CharlevoixCountyNews.com

EGRWSSS POSTAL CUSTOMER

News

ONLINE AT WWW.CHARLEVOIXCOUNTYNEWS.COM

weather

THURSDAY	FRIDAY	SATURDAY	SUNDAY	MONDAY
HIGH: 31 LOW: 25	HIGH: 45 LOW: 36	HIGH: 40 LOW: 29	HIGH: 35 LOW: 20	HIGH: 26 LOW: 16

snowfall			record temps				
DATE	2014-15	2015-16	DAY	AVG LOW	AVG HIGH	RECORD LOW	RECORD HIGH
2/16/2015	...44.1	ATLANTA	2/15/2016	...14°	...34°	...-13° (1989)	...57° (1994)
2/16/2015	...48.5	BOYNE FALLS	2/15/2016	...14°	...34°	...-21° (1979)	...56° (1994)
2/16/2015	...46	CHARLEVOIX	2/15/2016	...14°	...34°	...-21° (1950)	...57° (1983)
2/16/2015	...91.9	EAST JORDAN	2/15/2016	...14°	...34°	...-20° (1978)	...52° (1983)
2/16/2015	...118.6	GAYLORD	2/15/2016	...15°	...35°	...-24° (1963)	...57° (2000)
2/16/2015	...92.5	KALKASKA	2/15/2016	...15°	...35°	...-20° (1962)	...57° (1984)
2/16/2015	...25.6	MIO	2/15/2016	...15°	...35°	...-24° (1963)	...54° (1976)
2/16/2015	...92.4	PETOSKEY	2/15/2016	...15°	...36°	...-20° (1963)	...55° (1976)

Nellie Jane Johnson (Coblentz), 86

(MARCH 20, 1929 - FEB. 6, 2016)

Nellie Jane (Coblentz) Johnson died on Saturday, February 6, 2016, at Charlevoix Area Hospital.

Nellie was born March 20, 1929, in Boyne City, Michigan, to Theodore Allen Coblentz and Della Lena Anderson Coblentz, the youngest of five children.

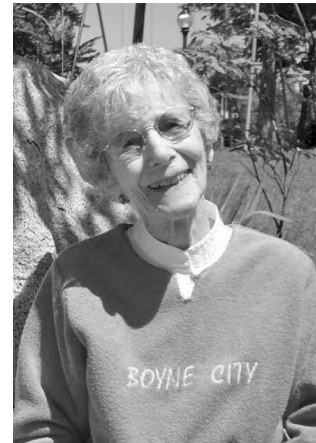
Nellie married Andrew C. Johnson on June 1, 1946, in Charlevoix, Michigan, and together they owned and operated Johnson Auto Parts on M-66 in Charlevoix for many years. Andrew and Nellie had no children but many nieces and nephews. Andrew preceded Nellie in death on February 7, 1995.

Nellie was also preceded in death by her four siblings and her parents. She is survived by many nieces and nephews, including nephew Barry (Shirley) Coblentz of Evergreen, Colorado, and niece Kay (Curtis) Merri-field of Charlevoix, Michi-

gan. At Nellies request there will be no service other than an interment service in the spring.

Ruth Mary Sheets (Marshall), 99

(MARCH 10, 2016 - FEB. 16, 2016)



Ruth Mary Marshall Sheets was the epitome of the term "lady." She led a life committed to spirituality, family, education for children and the betterment of the lives of the people in

her community.

Ruth was born in March 1917 on the Lindsley farm in Oakland County, Mich. She attended Milford High School and graduated from Detroit's Cooley High School in 1934. Ruth went on to university at Michigan State University, where she joined Kappa Alpha Theta sorority and met her future husband, Donald Elroy Sheets. They married in 1939 and lived in Detroit while Don managed the Statler Hotel.

The couple moved to Boyne City in 1941, where they owned and managed the Hotel Dilworth, a stately 50-room hotel popular with tourists in the summer and skiers in the winter. In those days a single room would go for \$2. Ruth took care of ordering food and overseeing the kitchen. She also served as hostess to the hotel's guests and took care of her children, Marshall, Tom and Bonnie.

Don and Ruth joined the First Presbyterian Church of Boyne City, where Ruth taught Sunday school and

worked with the Ladies Aid Society. Ruth also sponsored a branch of the Et Nu Sorority, a women's service club still active today.

In 1965 Don and Ruth sold the Hotel Dilworth and went on to manage two more hotels in Michigan - in Charlevoix and Cadillac - before retiring in 1974 and moving to Traverse City and then to Beverly Hills, Fla. They enjoyed many happy years there (and 59 years of marriage) before Don died in 1998 and Ruth moved back to Boyne to live with her son Tom. Tom owned a home on Pearl Street with a dock on the River Boyne where they enjoyed watching wildlife. Ruth became active in Friends of the Boyne River, the Presbyterian Church and the Monday Study Club, and the Grandvue Auxiliary.

She died peacefully in her apartment at American House in Charlevoix and will be greatly missed by all who had the pleasure to know her.

Ruth was preceded in

death by her husband, Don Sheets, and her children, Marshall, Tom and Bonnie. She is survived by her granddaughter, Kelly Sheets Dickson and George Dickson of Cambridge, U.K.; granddaughter Dana Hansen and Todd Hansen and their children, Tommy, Mailey and Jacob of Deer Park, WA; daughter-in-law Marie Sheets of Boyne City; daughter-in-law Sharon Mai of Phoenix, AZ; nephew Ken Davies of Detroit; nephew Henry Davies of Detroit; and niece Reverend Doctor Susan Davies of Veazie, ME. In lieu of flowers, donations are most welcome; please send to Friend of the Boyne River, P.O. Box 186, Boyne City, Michigan 49712.

A memorial service will be held at Stackus Funeral Home in Boyne City at 11am on Saturday, February 27. All are welcome to attend. A reception will be held following the memorial at the First Presbyterian Church of Boyne City.

Family and friends wishing to share a thought or

memory of Ruth are encouraged to do so online at www.stonefuneralhome-inc.com.

Betty Jean Nicloy (Scott), 86

(SEPT. 22, 1929 - FEB. 15, 2016)



Betty Jean Nicloy of Boyne City passed away on February 15, 2016 at The Brook in Boyne City.

A memorial service will be held 11:00 AM Saturday, February 27, 2016 at the Boyne City Free Methodist Church.

A full obituary will follow.

IMMEDIATE OPENINGS

Do You Need Extra Money for Rent, Car Payment or Savings for Retirement?

A.P.S.

Advertisers Postal Service
A Choice Publications Company

WEEKEND DELIVERY ROUTE POSITIONS AVAILABLE NOW!

For information on available routes, email LSnyder@AdvertisersPostalService.com or call Lewis at 231-331-5076.

Charlevoix County News

VOLUME 7, ISSUE 36

E-Mail News Releases and Announcements to Office@CharlevoixCountyNews.com

MICHIGAN MEDIA INC.
PO BOX 1914, GAYLORD, MI 49734-5914
PHONE 989-732-8160 • FAX: 888-854-7441

Notice to Readers: Typically, most advertising is honest and clear about special offers, however, please be sure to read the contents thoroughly to avoid misrepresentation. Michigan Media does not warrant the accuracy or reliability of content and does not accept any liability for injuries or damages caused to the reader or advertiser that may result from content contained in this publication. Errors in advertising should be reported immediately. Dam age from errors will not exceed the cost of the advertisement for one issue. Michigan Media, Inc. reserves the right to publish or refuse ads at their discretion.

The Charlevoix County News is published weekly on Thursdays. Published by Michigan Media, Inc., PO Box 1914, Gaylord, Michigan 49734.

POSTMASTER: Send address changes to Charlevoix County News, PO BOX 1914, GAYLORD, MI 49734-5914

Distributed to Boyne City, East Jordan, Charlevoix, Boyne Falls, Walloon Lake, Ellsworth and Atwood.
Available on News Stands: 75 cents a copy.

Subscriptions:
Local Home Delivery of the News: \$55.00/year.
Out-of-Country Delivery of the News: \$75.00/year.
(Local area includes Boyne City, Boyne Falls, Charlevoix, East Jordan, Ellsworth, Petoskey, Gaylord)

ADVERTISING DEADLINE MONDAYS AT NOON
Place Classified ads on-line at www.CharlevoixCountyNews.com
20 cents/word, \$2 minimum.

Office: 989-732-8160

Publisher DAVE BARAGREY I Office@CharlevoixCountyNews.com	Website Administrator CHAD BARAGREY
Editor JIM AKANS News@CharlevoixCountyNews.com	Advertising Sales EAST JORDAN & ELLSWORTH TINA SUNDELIUS tina@charlevoixcountynews.com
Sports Reporters CHRIS FIEL sports@charlevoixcountynews.com	CHARLEVOIX & EMMET COUNTIES JEFF JOHNSON Johnson@WeeklyChoice.com
MIKE DUNN Mike@WeeklyChoice.com	HUNTER REEVES Hunter@WeeklyChoice.com
BEN MURPHY BenMurphySports@WeeklyChoice.com	OTSEGO COUNTY MICHELLE NOIROT Michelle@WeeklyChoice.com
ANDY SNEDDON andysneddon36@yahoo.com	EMMET COUNTY ANDY BACKUS Back@WeeklyChoice.com
Distribution JEFF BARAGREY Jeff@WeeklyChoice.com	News Reporters TINA SUNDELIUS tina@charlevoixcountynews.com
Photography SCOTT RICHARDS Scott@CharlevoixCountyNews.com	KRYSTAL JOHNSON krystalbirgy@gmail.com
CINDA SHUMAKER RACHEL LANGE M. CHRIS LEESE	MICHELLE MEDJESKY mm@WeeklyChoice.com
Office CATHY BARAGREY CB@WeeklyChoice.com	

Drs. Oz and Roizen

Television's Dr. Oz and Cleveland Clinic's Dr. Roizen report on health, wellness and quality of life.



ARE YOU A SMART FOODIE?

The 2014 documentary "Foodie: The Culinary Jet Set" followed a collection of food fanatics as they indulged their quest for the perfect morsel by dining in the world's top posh-nosh restaurants.

In North America, over 47 million of you claim to be foodies, demanding healthier ingredients and novel flavors. Or so you say. But in the past two years, consumption of candies and individual snacks has gone up over 27 percent, chips by 24 percent. Folks gobble carb- and yogurt-coated snacks, granola bars and refrigerated smoothies, all laced with added sugars, excess fat and extra calories. And while many of you are cooking dinner more often (almost six times weekly), you often aren't cooking from scratch -- the healthiest way. Plus, around 55 percent of you regularly have ice cream and cookies, often high in sugars, added syrups, sat fat and calories.

Wanna be a smart foodie? Here's the recipe: Ingredients: Buy fresh produce. (To avoid the Environmental Working Group's pesticide-laced "Dirty Dozen" -- apples, celery, cherry tomatoes, cucumbers, grapes, nectarines, peaches, potatoes, snap peas, spinach, strawberries, sweet bell peppers -- go organic.) Avoid packaged, processed foods. Opt for lean proteins, like skinless chicken and salmon, and only 3 ounces of red meat a week.

Prep: Grill, bake or poach those proteins, and have 5-9 servings of produce daily, fresh, steamed or roasted. Use fresh herbs and spices (cumin, curry, turmeric, hot peppers, olives, garlic) to create fla-

vor surprises.

Serve: Dish it up for the whole family. Eating meals together at home promotes weight loss, improved nutrition and closer family ties.

HEY, IT'S OK TO PLAY WITH YOUR FOOD

Wimpy was a character in the "Popeye" cartoon. He "would gladly pay you Tuesday for a hamburger today." (Not long ago, Wimpy made a cameo appearance in the "Family Guy" episode titled "McStroke.") The chances of getting paid on Tuesday, however, were worse than hitting the lottery.

But eating hamburgers and hoping to hit the lottery have more in common than Wimpy and strokes: Science (really). After Mc-Marketers found that offering children a toy with their meals made them McCrazy for kiddie fast-food, some clever university researchers turned the tables. They went McOpposite and found that when kids -- and adults -- are offered the choice between a big ol' juicy hamburger and a smaller hamburger accompanied by a toy, prize or just the (lotto-unlikely) chance to win \$10, folks opt for the smaller burger and toy almost every time.

Why? Using functional magnetic resonance imaging, the university researchers found that offering someone a small prize or even an uncertain, lottery-type incentive activates the same reward center in the brain that food does!

So, if you're trying to upgrade your kids' nutrition, see if a small incentive (an origami bird or a sticker) plus a serving of green beans doesn't beat out fried potatoes. And we hope fast-food restaurants will help their customers choose healthier menu items by of-

fering those who order an entree salad, say, a toy train symbolizing how that tasty meal arrived in front of you! We're waiting for that train to show up. Tuesday, right?

A WOMAN'S HEART AND HEART ATTACK

"A Woman's Heart" is a 1992 album featuring six legendary female Irish artists; it sold more than any other album in the history of the Irish music charts. We hope that A Woman's Heart Attack, the American Heart Association's first scientific statement on myocardial infarction in women, gets at least that much attention. The paper, published in the journal Circulation, points out:

--High blood pressure is more strongly associated with heart attacks in women than in men.

--Young women with diabetes are at four to five times the risk for heart disease as young men.

--Compared to white women, black women have a higher incidence of heart attacks and young black women have higher in-hospital death rates. Hispanic and black women also are more likely to have multiple risk factors, such as diabetes and high blood pressure.

--Women are more likely to have atypical symptoms (along with chest pain), like shortness of breath, nausea or vomiting, and back or jaw pain.

--Post-heart-attack, women are consistently NOT given recommended medications, leading to worse outcomes. Cardiac rehabilitation is prescribed less frequently.

--Because women live longer, they have more complications following a heart attack than men.

If you're female and are overweight, have elevated

LDL cholesterol, diabetes, high blood pressure or smoke, see your doc to develop a heart-healthy plan that includes stopping smoking, weight management, nutritional counseling and physical training. If you're a heart-attack patient, insist on medications outlined in treatment guidelines, if appropriate, and get the support you need to join and stick with cardiac rehab.

FAT AND CANCER CELLS: LOSE IT OR THEY USE IT

Bobby Orr, Gordie Howe, Wayne Gretzky: Imagine they were descending on your goal -- and you'd never played hockey before. Well, if you're obese and get cancer, your chances of fighting off the attack are about as good as your ability to defend that goal. Why? It seems mature adipocytes (fat cells) secrete chemicals that cancer cells love to skate on.

A recent study published in Nature reveals that in prostate cancer, cancer cells can move on the fatty tissue that surrounds the prostate (called periprostatic adipose tissue) and spread quickly to other organs. Since obese folks have more of this adipose tissue and each cell is larger than normal, they're at a much higher risk of having their cancer metastasize. One more thing: The researchers also found that when you block the channel that periprostatic adipose tissue provides to cancer cells, you prevent cancer migration.

While the five-year survival rate for early-stage prostate cancer is near 100 percent, for those in whom it has spread to distant body parts, it falls to 28 percent. So if you become (or are) one of the more than 220,800 men in North America diagnosed with prostate cancer annually, make sure you're not packing extra fat around your belly or your prostate. Start walking 10,000 steps a day (get a pedometer and a walking buddy) and eliminate all added sugars and syrups (sugar fuels some cancers), red meat (ditto), processed foods and trans fats from your diet. You'll have a much better chance of blocking prostate cancer's slapshot!

(c) 2016 Michael Roizen, M.D. and Mehmet Oz, M.D. Distributed by King Features Syndicate, Inc.

News

ONLINE AT WWW.CHARLEVOIXCOUNTYNEWS.COM

Northern Michigan Brass Band presents Winter Concert

The Northern Michigan Brass Band (NMiBB), directed by Ralph Schweigert, will present a winter concert, 3 p.m. Sunday, February 28 at First Congregational Church, 101 State St., Charlevoix. General admission is \$10 for adults; students are admitted free. This 28 piece, British-style brass ensemble will perform a wide range of music by composers including Gustav Holst, William Walton, Herbert Clark and George Gershwin.

Renowned band director, Tim Topolewski, professor emeritus at the SUNY Potsdam Crane School of Music will share the conducting duties with Schweigert. Members of the Charlevoix High School band, under the direction of Tom Harder, will also join the NMiBB for King Cotton, a rousing march by John Phillip Sousa.

Schweigert said when he plans a concert program he tries to keep in mind that people listen to music in different ways.

"Some people listen with their heads, others with their hearts and still others with their feet," he said. "I try to include music that will appeal to all these listening styles. A highlight of this particular concert is sure to be Sousa's King Cotton where the



The Northern Michigan Brass Band (NMiBB) will present a winter concert, 3 p.m. Sunday, February 28 at First Congregational Church, 101 State St., Charlevoix. COURTESY PHOTO

E flat for Military Band is a cornerstone of all band literature. Dancing in the Park is by Peter Graham is a set of variations with ever-changing rhythms that will keep the audience on their toes. The program also includes selections from Gershwin's Porgy and Bess and Maid of the Mist, by Herbert Clark, featuring cornet soloist Keelin Reid, who is a senior at Petoskey High School.

Since 1999, the all-volunteer NMiBB has attracted enthusiastic adult brass players from across northern Michigan.

According to NMiBB President Dr. Edward R. Bahr, "We draw on such a wide area for our membership that we really don't consider ourselves tied to any one community. We belong to all of northern Michigan which is why we perform concerts in so many different venues throughout the area."

Since its inception, the NMiBB has presented over 100 concerts throughout the state.

Please visit www.northernmichiganbrassband.org for more information about NMiBB and this program. NMiBB is a 501(c)(3) organization and is eligible to receive tax-deductible contributions.

band will be augmented by outstanding brass players from Charlevoix High School."

This winter concert will in-

clude a wide variety of repertoire composed or transcribed for brass band beginning with Walton's Crown Imperial, a stately

march played for several royal occasions including the wedding of Prince William and Catherine Middleton. Holst's First Suite in

COURTS

CONTINUED FROM PG. 1A

covered more than \$400 missing from the business.

Gardner was stopped later by police when they found him riding a bicycle along M-66. He was carrying bags of groceries and had about \$320 cash in his possession.

Gardner was subsequently arrested and charged with felony larceny of breaking and entering a building with intent to commit felony and his bond was set at \$25,000.

Once Upon A Mattress

February 27, 7pm & February 28, 2pm. Join Charlevoix Middle/High School in this hilarious tweaking of the fairy tale, "The Princess and the Pea", Queen Aggravain has ruled that none may marry until her son, Prince Dauntless marries. However, she has managed to sabotage every princess that comes along. When Sir Harry and Lady Larken learn that they are going to be parents, wed or not, he goes off to the swamps and brings back Princess Winnifred ("Fred" to her friends). The queen is horrified and immediately begins to scheme, but Winnifred, with some help from Sir Harry, the King, and the Jester, isn't going to be quite so easy to get rid of. \$7 adults, \$5 students, \$20 family of four (Sunday matinee only).

IMMEDIATE OPENINGS

Do You Need Extra Money for Rent, Car Payment or Savings for Retirement?

A.P.S. Advertisers Postal Service
A Choice Publications Company

WEEKEND DELIVERY ROUTE POSITIONS AVAILABLE NOW!

For information email LSnyder@AdvertisersPostalService.com or call Lewis at 231-331-5076.

Subscribe to the Charlevoix County News

Distributed to Boyne City, East Jordan, Charlevoix, Boyne Falls, Walloon Lake, Ellsworth and Atwood.

friendly & positive news and sports covering all of Charlevoix County

PUBLISHED WEEKLY ON THURSDAY

Charlevoix County News

Call: 989-732-8160
Fax: 888-854-7441

E-Mail: Office@CharlevoixCountyNews.com
www.CharlevoixCountyNews.com

DAVE KRING 8 HOUR INDOOR USED CAR SALE

8AM-4PM • Saturday, February 20th

Save Cold, Hard Cash & Get a Smok'n Hot Deal Inside!

Over one hundred of the North's Best Pre-Owned Cars, Trucks & SUVs inside to choose from!

FINANCING AS LOW AS

2.39%

SAVE THOUSANDS DURING THIS ONCE A YEAR INCREDIBLE SAVINGS EVENT!

Get \$500 in **FREE GAS!**

\$500 MORE for your trade-in

ABSOLUTELY NO CREDIT APPLICATION REFUSED!



2008 Subaru Outback 2.5 i AWD

Take on winter! Full Time 4wd, 17" Alloy Wheels, 4 Wheel ABS, Heated Front Seats, Tire Pressure Monitor. Plus the 2.5L 170hp 4 cylinder engine gets 26MPG Highway!

INSIDE PRICE

\$10,950

2006 Chevrolet Impala LTZ

Sport Red Metallic, 3.9L V6, 6-disc CD Changer, Heated Leather Seats, Bose Premium Sound System, 17" Aluminum Wheels, 4-speed Automatic w/overdrive, 4-wheel Antilock Brakes & Much more!

INSIDE PRICE

\$6,980

JUST A SAMPLE OF THE HUGE SAVINGS

- 2009 Chevy Cobalt – 112k miles, Silver Moss Metallic.....\$6,480
- 2008 Cadillac DTS – Privacy Glass, Leather Seats..... \$7,990
- 2008 Honda Accord – Alloy Wheels, 31mpg Highway.....\$8,480
- 2005 Chevy Trailblazer – 4WD, Heated Seats.....\$8,950
- 2009 Toyota Camry – Sunroof, Bluetooth.....\$10,990
- 2012 GMC Savana – Cargo Bins, Engine Hour Meter.....\$11,480
- 2010 Chevy Malibu – only 48K Miles, Bluetooth.....\$11,990
- 2007 Jeep Cherokee Laredo – 4WD, 3.7L V6.....\$11,990
- 2007 GMC Yukon XL – Leather Seats, Alloy Wheels.....\$13,980
- 2009 Toyota Venza – AWD, Satellite Radio.....\$15,990

BRING YOUR TITLE BE READY TO TRADE!

Come early for the Best Selection!

Need Cash? We Buy Used Cars



DAVE KRING
CHEVROLET • CADILLAC
1861 US31 N. Petoskey • 231-347-2585
www.davekring.com



Sales: Mon-Fri. 8am-6pm, Saturday 8-2pm
Service: Mon-Fri. 7am-6pm, Sat. 8am-Noon • Quick Lube: Mon-Fri. 8-5:30, Sat. 8am-Noon



News Briefs

ONLINE AT WWW.CHARLEVOIXCOUNTYNEWS.COM

BOYNE CITY CHAMBER BUSINESS AFTER HOURS

February 18, 5:30-7:30pm, American Legion, 302 South Lake Street. American Legion Post 228 invites the community to come see their building and find out more about what the organization is, does, and what it means in the community. The event includes a 50/50 raffle, door prizes, food, drink, exciting information, and business networking all at one time. There is no charge for admission or hors d'oeuvres.

CHARLEVOIX ARTSY SOUP COOK-OFF

February 18, 5-7pm, Charlevoix Public Library community room. Student art show and vote for your favorite soup. Suggested donation is \$3 per person. For information please call (231) 547-9000.

EAST JORDAN DADDY DAUGHTER DANCE

February 20, 5-8pm, East Jordan Co-op Nursery. Daddy Daughter Dance hosted by East Jordan Co-Op Nursery. Dinner, Dancing & Crafts. Tickets are \$25 a couple and \$30 for two or more children. Enjoy this special opportunity for Dads and Daughters to make memories that will last a lifetime.

CHARLEVOIX DOGMAN CHALLENGE

February 20, Noon-2pm, The Dogman Challenge is a two-hour winter endurance event held entirely on the multi-use trails around Mt. McSauba Recreation Area and North Point Nature Preserve in Charlevoix. The course consists of a fast and challenging two-mile loop through rolling and wooded terrain. The rider to complete the most laps in two-hours is the champion and will receive a cash prize and trophy. Prizes and trophies will be awarded to the 1st, 2nd and 3rd place winners in both the Men and Women's Expert and Sport divisions. Mass start at noon on top of the bunny hill at Mt McSauba. Online entry to the Dogman Challenge Fat Bike Race is open at www.onestoprace.com. Awards Ceremony to follow at 4pm during the After Party at Lake Charlevoix Brewing Company located at 111 Bridge Park Drive downtown.

BOYNE CITY HELPING OTHERS COPE WITH CANCER

February 21, 6:30pm, Lifetree Café. Practical tips for helping loved ones cope with cancer will be discussed. The program, titled "Loving Those with Cancer: How to Cope, Care, and Give Hope," features filmed interviews with a cancer caregiver and a cancer patient who both share insights they've learned while dealing with the disease. During the episode, Lifetree participants will also be given an opportunity to share stories of how cancer has impacted

Lions Club donates to East Jordan STEM Program



EJ Lions Club present check to STEM teacher Denny Gocha, East Jordan Lions Club President, presents a check to John Twichel, East Jordan 5th grade STEM teacher. The STEM program encompasses science, technology, engineering, and mathematics. In the STEM classes, the 5th grade students have built famous buildings and bridges to scale, hosted family nights with building challenges for their relatives, and will be working on flight and underwater robotics projects in the spring. The EJ Lions Club is very proud to support the STEM program in the EJ 5th grade. COURTESY PHOTO

their lives or the lives of those closest to them. Admission to the 60-minute event is free. Lifetree Café is located 401 S Park St., Boyne City.

BOYNE CITY BLOOD DRIVE

February 22, Noon-5:45pm. Munson Healthcare Charlevoix Hospital, Christ Lutheran Church, 1250 Boyne Avenue. Simply call 1-800-RED CROSS (1-800-733-2767) or visit redcrossblood.org to make an appointment or for more information.

CHARLEVOIX ONCE UPON A MATTRESS

February 27, 7pm & February 28, 2pm. Join Charlevoix Middle/High School in this hilarious tweaking of the fairy tale, "The Princess and the Pea", Queen Aggravain has ruled that none may marry until her son, Prince Dauntless marries. However, she has managed to sabotage every princess that comes along. When Sir Harry and Lady Larken learn that they are going to be parents, wed or not, he goes off to the swamps and brings back Princess Winnifred ("Fred" to her friends). The queen is horrified and immediately begins to scheme, but Winnifred, with some help from Sir Harry, the King, and the Jester, isn't going to be quite so easy to get rid of. \$7 adults, \$5 students, \$20 family of four (Sunday matinee only).

CHARLEVOIX NORTHERN MICHIGAN BRASS BAND CONCERT

February 28, 3pm, First Congregational Church, 101 State Street. A winter concert by the Northern Michigan Brass Band featuring "something for everyone." Selections by Gershwin, Holst, Walton, Sousa and more. \$10 for adults, students admitted free.

EAST JORDAN EAST JORDAN PUBLIC SCHOOLS EXTRAVAGANZA

March 5, Castle Farms. Everyone is welcome to join us at a fun fundraising event

for East Jordan Public Schools. The evening starts with a complimentary Happy Hour sponsored by The Landing restaurant from 5:30-6:00. After that follow good eats, a cash bar, fun and games, silent and live auctions, DJ and dancing, and photo booth until 11:00pm. There's never a dull moment! Tickets are on sale now for \$50. Free childcare is available at the High School by reservation. Sponsors, Donations and Volunteers are most welcome. For tickets, to reserve childcare or more information call 231-536-2259.

CHARLEVOIX ONCE UPON A MATTRESS

March 5, 7pm & March 6, 2pm. Join Charlevoix Middle/High School in this hilarious tweaking of the fairy tale, "The Princess and the Pea", Queen Aggravain has ruled that none may marry until her son, Prince Dauntless marries. However, she has managed to sabotage every princess that comes along. When Sir Harry and Lady Larken learn that they are going to be parents, wed or not, he goes off to the swamps and brings back Princess Winnifred ("Fred" to her friends). The queen is horrified and immediately begins to scheme, but Winnifred, with some help from Sir Harry, the King, and the Jester, isn't going to be quite so easy to get rid of. \$7 adults, \$5 students, \$20 family of four (Sunday matinee only).

CHARLEVOIX BLOOD DRIVE

March 10, Noon-5:45pm. Community Reformed Church, 100 Oak Street. Simply call 1-800-RED CROSS (1-800-733-2767) or visit redcrossblood.org to make an appointment or for more information.

EAST JORDAN FREE SECOND SATURDAY

March 12, Noon-4pm, Raven Hill Discovery Center. Join the fun this Saturday at FREE (Families Reaching for Educational Excellence) Families can explore the hands-on museum and animals indoors and enjoy the outdoor exhibits as weather

permits. Bring the whole family or make it a special event for parent and child.

CHARLEVOIX BUSINESS EXPO & TASTE OF CHARLEVOIX

March 16, 4-7pm, Castle Farms. 6th Annual Charlevoix Area Chamber of Commerce Business Expo & Taste of Charlevoix. For more information call 231.547.2101.

BOYNE CITY CHAMBER BUSINESS AFTER HOURS

March 17, 5:30pm, Lynda's Real Estate Service, 27 South Lake Street. Co-sponsored by Family Fare.

BOYNE CITY FARMERS MARKET

The Boyne City Winter Farmers Market is being held at the Red Barn on Saturday's from 9am-1pm through April.

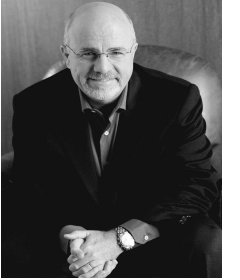
BOYNE CITY FREE COFFEE, DOUGHNUTS & LUNCH FOR VETERANS

The community of Boyne City will be hosting a free social gathering for all veterans from 9 to 11 a.m. on the fourth Tuesday of the month, beginning Jan. 26th at the Boyne Area Senior Center. Coffee and doughnuts will be donated by supportive area businesses. The senior center will also offer free lunches to all veterans on the fourth Tuesday of the month, starting in January. The senior center is located at 411 E. Division St.

CHARLEVOIX

Hospice of Northwest Michigan invites you to join our Monthly adult grief, loss & bereavement support group, which takes place the 2nd Sunday of each month from 4-5pm at the First Baptist Church, 6781 M66 North. This program is open to anyone in our community looking for assistance in their grief process and is facilitated by Rev. David Behling. There is NO CHARGE to attend. Please feel free to call Hospice at 231-547-7659 to register or for more information.

DAVE Says



Dave Ramsey

(Ethical dilemma)

Dear Dave,
I work an extra job part-time for a retail store chain while I'm getting out of debt. I like my job, except for having to pitch the store's credit card to customers. Like you, I believe debt is a bad thing. Still, my bosses are putting more and more pressure on me to sell the cards. It's been bothering me a lot lately, and I was wondering if you have any advice for my ethical dilemma?
Evette

Dear Evette,
If you've been in the business for very long, I guess you've discovered that most retail stores make more money on credit than the sale of merchandise. In my mind, you've got two types of integrity that are pulling at you. Your personal integrity wants you to do a good job for yourself and your employer, but it's also telling you that credit cards are bad products. That makes you feel like you've signed up to sell something that you don't believe in.

You wouldn't want someone working for you who wouldn't follow your instructions, and I wouldn't want someone working for me who doesn't believe in what they've been hired to do. For the sake of your own integrity, I would suggest that you find another part-time job. If you feel this strongly about the issue, sooner or later it will start to affect your performance and attitude—both at work and at home.

Hang on long enough to land another job before you quit. Then, be professional when you turn in your notice. Despite what lots of people say these days, there are plenty of part-time jobs out there!
—Dave

(Raising the rent)

Dear Dave,
I have two small du-

plexes in Idaho that I rent for \$400 a month, each on one-year leases. The rent is about \$50 to \$75 below similar units in the area. The tenants in all four places are great, so how do you know when—or if—you should raise the rent? If you raise the rent, how do you keep good relationships with your tenants?
Teresa

Dear Teresa,
My advice with rental properties is to raise the rent a little bit each year. You want to be fair and affordable for your tenants, but you don't want them thinking the rate is locked in forever. As a business owner, if you don't have small, manageable increases on a regular basis, you'll look up in four or five years and realize you're losing money because your rent is way below market value. Then, if you implement a big rate hike out of nowhere your tenants will have a fit. After that, you could be looking at empty properties.

When it comes time to renew the leases, try explaining to them that you've looked around in the market and other very comparable units are going for \$450 or more, but that you appreciate them and what good tenants they are. Then, propose signing the new lease at \$410 or \$420. Don't raise it to full market value. In most cases, this kind of approach will keep both parties happy.

As a landlord, you'll be able to retain quality tenants and make more money. As a renter, you'll have the comfort of knowing you rent isn't going to suddenly jump sky-high. It's a win-win!
—Dave

** Dave Ramsey is America's trusted voice on money and business, and CEO of Ramsey Solutions. He has authored five New York Times best-selling books. The Dave Ramsey Show is heard by more than 11 million listeners each week on more than 550 radio stations and digital outlets. Dave's latest project, EveryDollar, provides a free online budget tool. Follow Dave on Twitter at @DaveRamsey and on the web at daveramsey.com.*

LAW ENFORCEMENT

BOYNE CITY POLICE DEPT.

MONDAY, FEBRUARY 1

- 1312 Assist Sheriff Dept with two warrant arrests on Arthur St
- 1333 Report of possible juvenile complaint in the 1000 block of Boyne Av
- 1423 Vehicle unlock in the 300 block of E Water St
- 1451 Private property damage

- age accident in the 800 block of S Park St
- 1802 Vehicle unlock at Avalanche.
- 1938 Vehicle unlock in the 200 block of E Main.
- 2017 Natural death in the 900 block of Pleasant St

TUESDAY, FEBRUARY 2

- 0720 Citation issued for speed on Brockway
- 0815 Citation issued for speed on Brockway
- 1733 Vehicle unlock in the 1000 block of Boyne Av
- 1733 Private property damage accident on M-75 S.

WEDNESDAY, FEBRUARY 3

- 1052 Report of subject in the middle of Boyne Av shadow boxing.
- 1118 Domestic Disturbance in the 600 block of Jersey St
- 1447 Report of subject dumping scrap wood at the Recycling Center.
- 1658 Assist Charlevoix City Police in the 900 block of 918 West St.
- 1721 Citation issued for speed at W Michigan and Charlevoix St

THURSDAY, FEBRUARY 4

- 0736 Report of an alarm

- going off in the 200 block of E Water St
- 1130 Gasoline drive off from the 1300 block of Boyne Av
- 1806 Disturbance in the 500 block of Boyne Ave.
- 1911 Disturbance in the 700 block of E Main.

FRIDAY, FEBRUARY 5

- 0316 Assisted East Jordan PD with CSC.
- 1022 Assist Sheriff Dept on M-75 S
- 1228 Vehicle unlock in the 700 block of N Park St.
- 1353 No Trespass Order served
- 1758 Report of private prop-

- erty damage accident that occurred last week in the 1300 block of Boyne Av.
- 1952 Assist EMS in the 1000 block of Boyne Av.

SATURDAY, FEBRUARY 6,

- 0114 Report of intoxicated subject on W Main St
- 0940 Report of multiple prank calls in the 500 block of N Lake St
- 1355 Citation issued for No proof of insurance at State and Jefferson.
- 1428 Report of wallet. Was later found by owner.
- 1430 Larceny reported in the 400 block of N Lake St

- 1508 Interrupted attempted shoplifter in the 400 block of N Lake St
- 2322 Suspicious situation in the 1300 block of Nordic Dr.

SUNDAY, FEBRUARY 7

- 1510 Suspicious situation in the 500 block of N. Lake St.
- 1617 Attempted suicide in the 500 block of Boyne Ave.
- 1930 Assist MSP with attempting to arrest subject in the 900 block of N. Lake St.
- 2015 Assisted EMS in the 400 block of N. East St. John

SALES • SERVICE • RENTALS • L.P. • DUMP STATION

New Owners! New Location!

Freeway RV NORTH

www.freewayrv.com

EXIT 270 ON I-75 • WATERS, MI 989-732-0677 • 888-731-4198

Full Color BROCHURES

VILLAGE Graphics INC.

111 Antrim Charlevoix

231.547.4172
print@villagegraphicsinc.com

250 - \$125
500 - \$220
1000 - \$380
(Full Bleeds Add 10%)

32 lb Premium Stock • 2 Sided • Folded • Next Day Pick-Up

LEGENDS Auto Glass

I DRIVE TO YOU!

- Free Mobile Service
- Insurance Work
- Repair or Replace
- All Makes & Models

Troy LaCount • Owner N.G.A. Master Certified

"No Leaks For Life"

231-675-2348
Fax: 315-588-6088

www.legendsglass.com • Ellsworth

News

ONLINE AT WWW.CHARLEVOIXCOUNTYNEWS.COM

Find resale bargains and one-of-kind items at the Bergmann Center Resale Shop

By Jim Akans

Many Northern Michigan residents are familiar with the outstanding opportunities provided by the ongoing work of the Bergmann Center in Charlevoix. The staff at the non-profit Center assists in building life skills for individuals with developmental disabilities, with programs that include on-site job training and employment opportunities, volunteer opportunities, community awareness, daily living

skills and enrichment classes.

In August of 2010 the Bergmann Center opened a fantastic Resale Shop located right next to their main facility on Ance Road, offering terrific bargains on resale goods ranging from clothing, furniture and other household items, to one-of-a-kind new products created by local individuals.

The shop has many exciting products made by individuals at the Bergmann Center; such as fire starters from recycled material, fur-

niture painted by a local woman artist, gazing balls made from recycled bowling balls adorned with donated stained glass, items from clay, handmade jewelry, love lights made with clear stained glass and candles, and much more.

In addition to a lot of great merchandise, the Bergmann Center Resale Shop also offers a great place for individuals in the Center's program to learn skills on the job, such as running a cash register and processing inventory. These are valuable skills

that will continue to provide rewards for these individuals for years to come.

The Bergmann Center Resale Shop is located at 8888 Ance Road in Charlevoix, and is open Tuesday through Saturday from 9 am to 4 pm, and the staff accepts item donations during those hours as well.

For additional information call (231) 547- 9624 or visit www.bergmanncenter.org and follow the Resale Shop link.



The Bergmann Center Resale Shop offers terrific bargains on resale goods ranging from clothing, furniture and other household items, to one-of-a-kind new products created by local individuals. The Shop is located at 8888 Ance Road in Charlevoix, and is open Tuesday through Saturday from 9 am to 4 pm. COURTESY PHOTO

Volunteer Connections reaches over 500 community members

Char-Em United Way continues to match volunteers with local nonprofits through the use of Volunteer Connections. Since the improved site went live on January 22, 2014, volunteers and agencies alike have found the site easy to use and appreciate the new platform. Currently, there are 521 people registered as volunteers and 88 agencies have 113 opportunities listed. There were 697 people visiting the site seeking volunteer opportunities in the last month alone. We would love to see the number of volunteers on the site grow.

Volunteer Connections is a free resource that benefits the entire community. First introduced in late 2009, Volunteer Connections, a virtual volunteer center, is a tool Char-Em United Way uses to match available volunteers with needs that meet their skills and interests in our region. There are projects available for all ages and talents. Local volunteer needs are also served by providing additional resources for volunteer recruitment, recognition, and management. Volunteer Connections is one of the strategic initiatives developed by Char-Em United Way and is supported through donations to the United Way campaign as well as proceeds from the annual spring fund raising event, Instant Wine Cellar, that will happen April 22nd this year.

Nonprofit agencies in Charlevoix and Emmet Counties list their volunteer needs on the Volunteer Connections website. Volunteers then help with these requests, based on their skills, interests, and availability. By logging on and becoming a "Fan" of an agency, volunteers receive an email whenever a new need is posted. This way volunteers can connect to agencies they have a passion for and would like to support through their volunteerism.

Organizations certainly benefit from the volunteers but the volunteers can gain much from their volunteer experiences as well. Job seekers can find opportunities to gain valuable experience, high school students can explore career possibilities, and retirees can share their knowledge and remain active in the community.

Lorraine Manary, Char-Em United Way Executive Director, believes that volunteering is an integral element of citizenship. "This United Way program is helping to harness community spirit. Volunteer Connections continues to grow and serve the communities of Charlevoix and Emmet Counties," said Manary.

If you are interested in learning more about volunteer connections, or would like help joining the site, please call the Char-Em United Way office at (231) 487-1006 or email info@charemunitedway.org.

CITY COUNCIL

CONTINUED FROM PG. 1A

the land," she said. Resident Joanne Beeman spoke in favor of the easement. "It would behoove this council to look at what is precious to us," she urged. Second ward resident Greg Stevens, a previous city councilman talked about the lack of information the council had when approving the now controversial disc golf course at McSauba. "I don't think council was fully informed at that time. Make sure you know everything before you do anything," he advised.

Councilperson Luther Kurtz led the discussion to clarify whether creating a conservation easement is actually necessary to protect the area. "We have an

existing restriction on the property," he reminded the council. According to the city charter the city cannot sell or build at the parks without a vote of the people. However, there have been buildings constructed at Michigan Beach in spite of the charter including the water treatment plant. "The tighter the restrictions we get, the happier I am," said Mayor Gabe Campbell who brought up an incident where trees were cut down at McSauba 5 months ago.

One resident reminded council that not only does the City Charter protect the area from sale and large scale development but there are state and federal laws in place as well. "I think we should consider other options before we move forward on this. This is a restriction



Third ward resident Diane DePriest spoke during a public hearing at the February 15 City Council meeting. She expressed concern that a conservation easement for the Mt McSauba Recreation Area and Michigan Beach Park would prevent longtime residents from enjoying the area the way they do now.

on us," said Kurtz. A conservation easement would place a third party in charge of making sure the

city adheres to using the parks only according to specifications they would include in the easement.

Options besides the easement include doing nothing or creating a restrictive ordinance. Kurtz made a motion to research the other two options, it was seconded by Councilperson Aaron Hagen and failed. "I just feel it would be irresponsible to put it on the ballot without all the information," said Hagen. A motion by Councilperson Shirley Gibson to direct staff to draft the required ballot language and bring back to council for final approval in time to get it on the November ballot was seconded by Councilperson Leon Perron and passed unanimously.



Boyne Falls Public Schools

Student of the Week

Trevor Dunham

Grade: 10

Parent's Name(s): Kevin and Jody Dunham

Future Plans: Culinary Favorite Book: The Last Apprentice series

Hobbies and Interests: Video Games

Favorite School Activities: Tim's favorite school activities are physical education and social studies.

Staff Comments: "Trevor Dunham is a student that stands out in his ability to never give up. His persistence is a character trait that will benefit him throughout life. Trevor has a talent with pottery, and has created some beautiful and creative pieces of artwork this school year. Trevor is helpful, kind, and caring. Congratulations, Trevor!" — Melissa McGuiness

Why not get the Charlevoix County News delivered to your home

Local Home Delivery: \$55.00/year.
Out-of-County Delivery: \$75.00/year.

Phone: 989-732-8160
Office@CharlevoixCountyNews.com • www.CharlevoixCountyNews.com

Classifieds As Low As \$2.00
989-732-8160

GOOD SAMARITAN RESALE SHOP

9746 MAIN STREET, ELLSWORTH • ON THE BREEZEWAY

Our inventory is bursting at the seams. Stop by and check out our huge selection... we're sure to have something you've been looking for.

FURNITURE & MORE STORE

6519 CENTER STREET, ELLSWORTH

Located on Main Street in Ellsworth. We offer sofas, tables and chairs, end tables, lamps and more! All the proceeds benefit the Good Samaritan Food Pantry.

Furniture Donations Needed Now

All proceeds go to purchasing food for our food pantry

Open Thursday, Friday 10-4, Saturday 10-2
231-588-2208

TUESDAY – Spin the wheel for a Deal!!!!
WEDNESDAY – 50% off all Clothing
THURSDAY – 10% off anyone 55 or older & all military
FRIDAY – Buy 1 get 1 free on selected item of the day
SATURDAY – Fill a bag of clothing for \$5.99

8888 Ance Rd., Charlevoix MI
2 miles north of the bridge
Open Tues-Sat 9-4
231.547.9624
www.bergmanncenter.org

CUSTOM & ANTIQUE FURNITURE

In the Rough, Professionally Painted or Completely Restored

Over 7,000 sq. ft. of Furniture, Antiques & Goodies

FURNITURE BARN
06176 Old U.S. 31 South, Charlevoix, MI 49720
(231) 547-0133 • Cell (231) 881-0353
[Web: dkellyantiques.com](http://www.dkellyantiques.com)
E-Mail: donkellyantiques@yahoo.com

Hidden Treasures

Northern Michigan Treasure Hunter's Guide to area antique, consignment, resale and thrift shops

<p>CHARLEVOIX</p> <p>Bergmann Center Resale Shop 8888 Ance Road, Charlevoix 231-547-9624 www.bergmanncenter.org</p> <p>Kelly's Antiques & Furniture Barn 06176 Old US 31 S., Charlevoix 231-547-0133 www.dkellyantiques.com</p> <p>Goodwill Retail and Donation Center 402 Petoskey Avenue Charlevoix 231- 437-6176</p>	<p>CHEBOYGAN</p> <p>Goodwill Retail and Donation Center 982 S Main St.,Cheboygan 231-445-9300</p> <p>EAST JORDAN</p> <p>Crossroads Resale Shop 205 Water Street., East Jordan 231-536-7606 Open Tuesday thru Saturday</p> <p>ELLSWORTH</p> <p>Good Samaritan Furniture & More Store 6519 Center St., Downtown Ellsworth 231-588-2208 thegoodsam.org</p>	<p>ELLSWORTH</p> <p>Good Samaritan 9746 Main Street, Ellsworth 231-588-2208 thegoodsam.org</p> <p>FREDERIC</p> <p>Pineview Military Surplus 7328 Old 27 North, Frederic 989-348-8300</p> <p>GAYLORD</p> <p>A-2-Z Resale 1829 Old 27 South, Gaylord 989-732-9500</p> <p>Goodwill Retail and Donation Center 1361 Pineview Dr. (near Lows), Gaylord 989-705-1747. www.goodwillnmi.org</p>	<p>GAYLORD</p> <p>Salvation Army Family Store 919 S. Otsego Ave., Gaylord 989-448-2357</p> <p>Homespun Antiques & Crafts 230 West Main Downtown Gaylord 989-731-4305 Mon – Sat 10-5, Sun Noon - 4</p> <p>GRAYLING</p> <p>The-Brickery.com <i>Two floors of treasures</i> 107 Ottawa, Grayling, One block north of the light 989-348-8999</p>	<p>HARBOR SPRINGS</p> <p>New Beginnings Thrift Shop 650 W Conway Rd., Harbor Springs 231-348-2980</p> <p>MIO</p> <p>Strawberry Patch Resale & Consignment Store Downtown Mio, Mio MI (989)826-1503 Open Mon – Sat 10 am to 5 pm</p> <p>PETOSKEY</p> <p>Goodwill Retail and Donation Center 1600 Anderson Rd., Petoskey 231-348-6947 www.goodwillnmi.org</p>
---	---	---	---	--

News

ONLINE AT WWW.CHARLEVOIXCOUNTYNEWS.COM

The Last River Draw crowdfunding campaign kicks off

In its first week, The Last River Draw fundraising campaign, which kicked off on February 8, is \$10,600 closer to its local match requirement of \$25,000. If \$25,000 is raised by April 7, 2016 the project will win a matching grant of \$25,000 with funds made possible by MSHDA and MEDC's Public Spaces Community Places program.

"We have had amazing support right out of the gate with several local businesses, organizations and individuals pledging and donating toward the project. Over Presidents' Weekend, several fundraisers took place that generated an additional \$1,800 in donations to the project. Boyne River Inn donated a portion of their sales on Thursday night, Cafe Sante' donated a portion of their food sales on Friday, and a bottle drive at Family Fare on Saturday topped off a very productive weekend toward the goal," said Lindsay Regan,

fundraising committee chair.

Several more fundraising events are planned over the next 2 months including:

- February 27, 10am to 1pm, BC Lanes and Venue Sports Bar will donate a portion of their food and bowling revenue. This will be a great event for the family to have some fun and support the project. Sponsored by BC Pizza.

- March 23, 7pm, Friggy's SOBO Pub will host an Adult Spelling Bee featuring teams of two from many of our local organizations vying for a top spot in the contest. Registration is \$25/team with 100% of the proceeds going to the logger sculpture. Friggy's will also feature Logger inspired pasties (chicken, vegetable and beef) with a portion of the proceeds going to the project.

- A Penny Drive is being organized by the Girl Scouts with jars placed at businesses around town to drop your pennies in. "Every

penny counts" is the theme.

The Boyne City Main Street initiative of a life-size bronze sculpture of a logger placed on a log floating in the Boyne River pulling a log with a pike pole used in the early lumbering era. The idea for the sculpture came from Anthony Williams who asked Martha Sulfridge, a local sculptor, if she would be willing to create and build it.

In addition to these events, other support has come from The Charlevoix County Community Foundation, the Boyne Area Chamber of Commerce, The Boyne Valley Lions Club, The Boyne City Rotary Club, Pat O'Brien, Wildwood Rush Zip Line and many other individual donors.

For project details and to donate, please visit: www.Patronicity.com/LastRiverDraw or contact mainstreet@boynecity.com or 231.582.9009.



Lori Meeder (at left) of Boyne City Main Street and Kyle Marshall, General Manager of Cafe Sante'. COURTESY PHOTO



CHARLEVOIX COUNTY COMMISSION ON AGING

"The mission of the Charlevoix County Commission on Aging is to provide the highest quality senior services in partnership with the community. We focus our efforts on advocacy and support for seniors and their caregivers by promoting health, wellness, and education to achieve a dignified and enriched quality of life."

218 W. GARFIELD ST., CHARLEVOIX, MI 49720

Phone: (231) 237-0103,
Toll Free: (866) 428-5185
Fax: (231) 237-0105

Office Hours:
Monday - Friday
8:30am to 4:30pm

COA BOARD

Shirley Gillespie, Director
Richard Fish, Chair
Ruth Gee, Vice-Chair
Suzanne Carlson, Secretary
Nancy Ferguson, Board Liaison
Jean Kinsley, Janet F. Shepherd
Jerry Kelts and Cathy Kessler

OFFICE STAFF

Shirley Gillespie, Director
Theresa Graham, Receptionist
Sally Nye, Database
Tracey Rupinski, Clinical Manager
Debbie Peck, Food Service Manager

LOCAL SENIOR CENTER CONTACT INFORMATION

Beaver Island Center:

Ann Partridge
26215 Main St, BI, 49782
231-448-2022

Boyne Area Senior Center:

Terri Powers
411 E. Division, PO Box 964
Boyne City, MI 49712
Phone: 231-582-6682

Charlevoix Senior Center:

Nona Jadwin
06906 Norwood Road
Charlevoix, MI 49720
Phone 231-547-5361

EJ Community Center

Brenda Skop
116 Main Street,
East Jordan, MI 49727,
Phone: 231-536-7831

THE COA OFFERS THE FOLLOWING SERVICES:

Congregate Meals
Foot Care Management
Emergency Communication Devices
Home Delivered Meals
Homemaker Services
In-Home Respite
Information & Referral
Medicare D Counseling
Medication Management
Personal Care Assistance
Project Lifesaver
Senior Hi-Lites Newsletter
Tax Assistance
Volunteer Opportunities

WEBSITE ADDRESS:

www.charlevoixcounty.org/coa.asp

IT'S TAX TIME AGAIN

The Charlevoix Senior Center is again offering free high-quality tax help through the VITA Foundation Tax-Aide program, giving peace of mind and economic benefits to taxpayers, and their families.

The program will be available every Tuesday from 9:00 a.m. to 1:00 p.m., beginning on February 9th and ending on April 12th, 2016.

The preparers will be: Linnny Arnold, Randy Cebulski, Evelyn Davis, Bill Keehn, John Loucks, and Nancy Moore, with Cheryl Coates serving as greeter.

Please bring the following documents with you:

- ___ Copy of last year's income tax return
- ___ Social Security cards or other official documentation for yourself and all dependents
- ___ W-2 forms from each employer
- ___ Unemployment compensation statements
- ___ SSA-1099 form for Social Security Benefits you received
- ___ All 1099 forms (1099-INT, 1099-DIV, 1099-B, etc) showing interest and/or dividends, and documentation showing original purchase price of sold assets.
- ___ 1099-MISC showing any miscellaneous income
- ___ 1099-R form if you received a pension or annuity
- ___ W2-G form for gambling income
- ___ all forms indicating federal income tax paid
- ___ dependent care provider information (name, employer ID, Social Security number)
- ___ All receipts or canceled checks if itemizing deductions
- ___ Receipts showing sales tax paid on new motor vehicles in purchased 2015 (automobile, truck, RV, motorcycle etc)
- ___ Receipts for any other large or unusual purchases
- ___ Receipts for any energy efficient home improvements
- ___ Receipts for college tuition or student loans
- ___ Property Tax bills for 2015 and winter of 2014 if paid in February 2015
- ___ Health Insurance Bills
- ___ Automobile Insurance Policy (for medical portion of premium paid)
- ___ Home Heating Bills (Nov 2014 thru Oct 2015)
- ___ NEW - If medical insurance was purchased through the marketplace, include Form 1095 and if reimbursed for premiums, Form 1095A.

BOYNE AREA SENIOR CENTER ACTIVITIES

Wednesday, February 17
Foot Clinic (by Appt)
10:30am Wii Bowl Practice
11am-2pm CVX Vet Affairs
John Hess

Thursday, February 18
10am "Basic" Spanish
11am Arthritis Foundation
Exercise Program
Wii Bowling

Friday, February 19
11am O.J. Atkins
Raffle
Rummikub

Monday, February 22
Pretty-Bag Bingo/Cert
10:30am Line Dancing
Rummikub

Tuesday, February 23
9-11am Veterans' Social
Gathering & Lunch After
Pretty-Bag Bingo -
Free Lunch Prize
Mexican Train

Wednesday, February 24
10:30am Wii Bowl Practice
Various Card Games

CHARLEVOIX SENIOR CENTER ACTIVITIES

Wednesday, February 17
12:45pm Bingo
11:30am Back Porch Music
The Deepest Height

Thursday, February 18
11am Chair Yoga Class
1pm Wii Bowling Practice
1pm Mahjong

Friday, February 19
FOOT CLINIC
9:30am Craft Class
1pm Rummy

Monday, February 22
1pm Bridge
1pm Woodcarving
7pm Bible Study

Tuesday, February 23
Turtle Creek Casino Trip
9am-1pm Tax Assistance
11am Chair-Yoga Class
1pm Paint Class

Wednesday, February 24
10am-1pm Veterans Services
12:45pm Bingo

EAST JORDAN SENIOR CENTER ACTIVITIES

Wednesday, February 17
GAME DAY!
Pool Table / Ping Pong
11am-2pm CVX
Veterans Affairs
10:30am Crafts
1pm Cards

Thursday, February 18
11am KARAOKE DAY!
10:30am Chair Exercise
1pm Paint Class

Friday, February 19
11am Dollar in the Jukebox
BAKE RAFFLE 50/50—
everyone bring something!
Bingo

Monday, February 22
Exercise Room
8am-1pm Walking M-F
10:30am Chair Exercise

Tuesday, February 23
10am E.J. Story Time
12:30pm Bingo -
Meal Ticket Prize

Wednesday, February 24
GAME DAY!
Pool Table / Ping Pong
10:30am Crafts
1pm Cards

CHARLEVOIX COUNTY SENIOR CENTER MENU

Wednesday, February 17
MEATLOAF

Thursday, February 18
CHICKEN ALA KING
BISCUIT

Friday, February 19
PORK 'N RICE**

Monday, February 22
VEAL & MUSHROOM
GRAVY

Tuesday, February 23
CHICKEN ENCHILADA

Wednesday, February 24
COOK'S CHOICE

**NON-MEAT CHOICES AVAILABLE FRIDAYS DURING LENT

THIS PAGE SPONSORED BY THE FOLLOWING CHARLEVOIX COUNTY BUSINESSES



www.whyLyndas.com
27 S. Lake St., Boyne City • 231-582-9555



The Brook
Retirement Communities
of Boyne City

701 Vogel Street Boyne City • ph.: 231.582.4300

News

ONLINE AT WWW.CHARLEVOIXCOUNTYNEWS.COM



First Presbyterian Church presents check to Crossroads Resale Shop

Crossroads Ecumenical Resale Shop President, Rose Hines was presented with a \$5,000 check by East Jordan First Presbyterian Church Pastor Lois Aroian and two members of her congregation, Ken Visser and Pat McGinn. The church was one of five area churches

that founded Crossroads in 2005.

The funds will be placed in Crossroads Building Fund account and will be used toward the 4,500 square foot expansion project, which will offer much needed space for the resale store and Care and Share Food Pantry as well as office space for meeting with those in need of financial assistance. Furniture and off-season items currently being

stored off site in the Family Fare Plaza will also find a permanent home within the new space.

For more information about the Crossroads mission and ways you may be able to help Crossroads help others, please call 231-536-7606. Donations can be sent to: P.O. Box 937, East Jordan, MI 49727.

Photo at left: L to R: Pat McGinn, Pastor Lois Aroian, Rose Hines & Ken Visser. COURTESY PHOTO

Rediscovered Michigan film a blast from the past

After spending decades in a basement in the eastern Upper Peninsula, a 1930s-era newsreel from the Michigan State Highway Department has resurfaced to remind us of the challenges - and the fun - of winters past. The film, "Winter Comes to Michigan", created by the precursor agency to the Michigan Department of Transportation (MDOT), gives us a black-and-white window to the era when Murray Van Wagoner, a future Michigan governor, ran the department from 1933-1940.

The film was one of several reels found by sisters Nancy and Barbara Sleeper of Newberry. They discovered them in their mother's basement and wanted to preserve them as part of their family heritage.

"Our grandfather, Sanborn Sleeper, was the superintendent of the Luce County Road Commission from 1928 until sometime around World War II," Nancy Sleeper said. She believes he acquired the films during that period.

Sanborn Sleeper was instrumental in bringing the Snogo, an early snow blower, to Michigan, Nancy said. Some of the reels featured film of the Snogo equipment being tested near Newberry.

"We saw the 'Winter Comes to Michigan' film and thought, gee, this is some great footage of those old-time 'busy highways,'" Nancy said. "They were so interesting, we couldn't see just holding onto them."

So the Sleeper family donated the original reels to MDOT. They've now been digitized, restored and uploaded to the department's YouTube channel. The film's "man against nature" theme focuses on the challenge - as real today as it was then - of keeping roads open during Michigan's harsh winters.

"Winter maintenance is a gigantic task for heroic men and efficient machines," says the film's foreword. "It is a public service fraught with grave responsibilities. Our highways must be kept open."

Winter travel before modern highways was not an easy ride.



The late Rudy Maki, 80, an honoree of the U.S. Ski and Snowboard Hall of Fame, watches the "Winter Comes to Michigan" film and recognizes a scene from Suicide Hill ski jump in Ishpeming, Mich. Maki died unexpectedly on Jan. 17. (MDOT PHOTO)



Elaborate toboggan runs (shown here) and outdoor public skating rinks were popular winter pastimes - once reliable winter travel made it possible for Michiganders to get out and enjoy them. (MDOT PHOTOS)

The season was something to be survived, not enjoyed.

"Yes, winter is a season of unusual beauty," intones the narrator. "Only a brief score of years ago, however, the idyll of winter brought only the sad realization of a long season of iso-

lation."

Modern highways and winter snow removal equipment changed all that. With the advent of reliable winter maintenance, the film suggests, the state's growing highway system opened up winter as a play-

ground for sports, recreation and tourism.

The film shows residents enjoying outdoor winter fun at locations such as Ishpeming's Suicide Hill ski jump, fledgling downhill ski areas, outdoor public ice skating rinks and an elaborate toboggan run. Film-maker and author Bill Jamerson, whose documentaries have explored winter sports and other aspects of state history for Michigan Public Television, said many of the film locations were probably in the U.P., while the toboggan run scene was probably filmed at a winter sports park in Grayling.

Most of these winter parks started in the late 1920s, Jamerson said. His "Winter Wonderland" documentary looked at the golden age of winter recreation from the 1930s through the 1960s, made possible via better automobiles and snow removal equipment.

"Winter driving was hazardous, so this film goes a long way in showing that progress

had been made," Jamerson said. "Remember, up until WWII, snow trains brought people up to the Grayling winter sports park from Detroit. So, rail was considered the safe option for most people. Trains were also bringing people from Chicago and Milwaukee up into Iron Mountain."

Transportation - even in this period before the Mackinac Bridge - helped boost the state's winter tourism by allowing safe and reliable winter travel. It also may have helped end this golden age. When air travel became routine, more and more Midwesterners headed to the higher slopes and newer resorts in the west.

"I think an important thing these film do is remind us who we are," Jamerson said. "For example, there once was a day when skating rinks were overflowing with families ... it could happen again!"

Watching the film brought back vivid memories for one veteran ski-jumper.

"That's Ishpeming. That's Suicide Hill, back when it was smaller," said the late Rudy Maki, 80, an honoree of the U.S. Ski and Snowboard Hall of Fame. Maki died unexpectedly on Jan. 17.

An Ishpeming native, Maki knew Suicide Hill well. He jumped competitively there at age 8 before earning the national championship in 1955 and setting hill records on jumps in Ishpeming and Iron Mountain.

One thing Maki said has changed since then: transportation. In the old days, ski jumpers traveled to tournaments - even across the country - by car. And then, only when the weather allowed. In 1947, Maki recalled, Ishpeming hosted a national championship, but a massive storm socked in the town and postponed the tournament for a solid week. Putting up all of the out-of-town visitors was costly.

"That was the year the ski club went broke," he said.

Get the Charlevoix County News delivered right to your own home?

989-732-8160

★ LOCAL HOME DELIVERY OF THE NEWS: \$55/YEAR.

★ OUT-OF-COUNTY DELIVERY OF THE NEWS: \$75/YEAR.

We have what you need!

- Quit Smoking! We have E-Cigarettes. Stop in and try a sample!
- Fax, Copy and UPS Center (we also pack for UPS shipping)
- Complete prescription services and education
- Diabetic, first aid, and sports injury supplies
- Most Special orders in stock with 24 hours
- Souvenirs, gifts, cards & puzzles

Central Drug Store

Charlevoix (downtown at the traffic light)
www.Central-Drug.com
(231) 547-2424 fax (231) 547-0760

**JOHN F. OCHS
LANI D. OCHS
PHARMACISTS**

Health SERVICES directory

BEAUTY SALON

Carriage Clippery
308 South Otsego, Gaylord
989-732-5094

OriginaILS by Shelley
200 Fairview St., Gaylord
989-732-7100

DENTIST

Main Oak Family Dentistry
219 East Main St.
Gaylord
989-732-6271
www.mainoak.com

FITNESS FACILITY

Otsego County Sportsplex
1250 Gornick Ave., Gaylord
989-731-3546
www.ocsportsplex.com

Otsego County Community Center
315 S. Center, Gaylord
989-732-6521
www.otsego-county-parks-rec.com

HOME CARE-NON MEDICAL

ComForCare Home Care
814 S. Otsego Ave., Suite C,
Gaylord
(989)448-2778
ComForCare.com/NorthernMI

HOME HEALTH CARE

Health Dept. of NW Michigan
220 W. Garfield,
Charlevoix
231-547-6092
www.nwhealth.org

Munson Home Health Care
309 W. North St., Gaylord
800-252-2065
www.munsonhealthcare.org

Community Home & Health Services
657 Chestnut Ct.,
Gaylord
989-732-6374
www.communityhomehealthservices.com

HOSPITALS

Munson Healthcare Grayling
1100 Michigan Ave.,
Grayling
989-348-5461
www.mercyhealthgrayling.com

Charlevoix Area Hospital
14700 Lake Shore Dr.,
Charlevoix
231-547-8630
www.cah.org

MASSAGE THERAPY

The Naturalist
1029 Gornick Ave., Gaylord
989-705-1451

MASSAGE THERAPY

Self Heal Massage/Body Work/Energy Medicine
Cathy Brink NCMP/AMTA,
Reiki Master/Teacher
1029 Gornick Ave.,
Alpine Suite #103
989-619-6282

NUTRITION & SUPPLEMENTS

Four Star Nutrition
604 W. Main,
Gaylord
989-448-8618
www.fourstarnutrition.net

PHARMACY

Central Drug Store
301 Bridge St.
Charlevoix
231-547-242
www.central-drug.com

PHYSICAL THERAPY

Boyne Rehabilitation Center
197 State St, Boyne City
231-582-6365

SENIOR ASSISTANCE

Otsego County COA
120 Grandview Blvd., Gaylord
989-732-1122
www.otsego-county-coa.org

Crawford County COA
308 Lawndale St., Grayling
989-348-8342
www.crawfordcoa.org

Seniors Helping Seniors
221 E. Felshaw St., Gaylord
989-448-8323
www.seniorshelpingseniors.com/northernmichigan

Charlevoix County COA
218 West Garfield St., Charlevoix
231-237-0103
www.charlevoixcounty.org/coa.asp

TO ADD YOUR BUSINESS OR SERVICE LISTING CALL 989-732-8160

This Year, do your taxes at Simple Auto!

Bring us your last paystub or your W-2, we'll estimate your return through TaxMax® and you could have your down payment!



\$20 OFF Tax Preparation

Drive Today...Don't wait in long lines...
Bring us your Tax Documents...
Save Time & Money!

Tax Refund Services



2005 Toyota Rav 4



2004 Jeep Liberty



2010 Chevy Cobalt



2006 Chevy Uplander



2004 Honda Accord



2004 Chrysler Pacifica



2001 Chevy S-10 Pickup



2007 Chevy Equinox



2009 Pontiac G-3



Apply On-Line at www.Simple-Auto.com.

Simple Auto Pays Top Dollar for Your Trade!

Also located in Traverse City



Contact Zeke Eberly

Zeke@Simple-Auto.com



2372 US 31 North Hwy.,
Petoskey, Michigan

855-582-2501

Damaged Credit – Bankruptcy – Repossessions?
We don't care. If you have a job, we will get you into a dependable vehicle.

Everyone is Approved!

SIMPLE RENTAL

Rent a car as low as

\$19.95/day

The Northern Michigan Brass Band IN CONCERT

Sunday, February 28 • 3:00 p.m.

First Congregational Church
101 State Street
Charlevoix, Michigan

\$10 General Admission
Students Admitted Free

Tickets Available
at the Door

For complete program
information, please visit
our website at

www.northernmichiganbrassband.org



IMMEDIATE OPENINGS

Do You Need Extra Money for Rent,
Car Payment or Savings for Retirement?



Advertisers
Postal Service

A Choice Publications Company

**WEEKEND DELIVERY ROUTE
POSITIONS AVAILABLE NOW!**

For information on available routes, email

LSnyder@AdvertisersPostalService.com

or call Lewis at 231-331-5076.



2 Events, 1 Day... both FREE

Event 2 for parents, the community and businesses.

2015-2016 Lecture Series

Dr. Mike Clumpner

Community Awareness: A lecture on active shooter events

**Thursday, March 3
7 p.m.**

Conference Rooms 3 and 4 • Iron Horse Café

Event 1 for active public safety members, city/county officials, and public/private school administrators.

An 8 hour training on Joint Public Safety Response to Active Shooter Events

Free (seating is limited to 225)
March 3, 2016 from 8:00 a.m. to 5:00 p.m.
Registration opens at 7:30 a.m.
(lunch will be provided)

North Central Michigan College
Conference Room 3 and 4 (Iron Horse Cafe)
1515 Howard Street • Petoskey, MI 49770

Contact North Central at marketing@ncmich.edu, or by
phone at (231) 348-6600 to register.

Medical CEs available.

We live in a world facing ever-changing forms of violence and terrorism. Dr. Mike Clumpner will discuss civilian personal safety and how to prevent dangerous encounters using awareness and recognition.

Dr. Clumpner is 25-year veteran of public safety including 24 years in the fire services, 21 years as a paramedic, and seven years in law enforcement special operations.

Free admission.

Tickets required.

Tickets are available at all North Central locations. For more information, call 231-439-6225.

